

# Videosec<sup>®</sup>

## TIC2621SR-F3-4F4AC-V

### Dual spectrum Thermal Camera 256x192px/57° + 4Mp/90° white, 25fps

2 independent video channels uotput: 1280x720@25fps thermal image + 4M (2688x1520) visible @25fps, Microphone, Speaker, Light ....



Human  
Detection



Vehicle  
Detection



Smoking  
Detection



Fire/Smoke  
Detection



Fire spot  
Detection

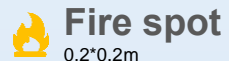


### Detection Distance



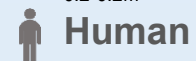
Smoker

≤30m



Fire spot  
0.2\*0.2m

≤40m



Human

≤120 m



Vehicle

≤300m



Vandal-proof



Deep Learning  
Algorithm

Fire Protection

Alarm Policies  
Flexibly Configured

- Accurately distinguish target type, target can be superimposed detection frame
- Standard with a variety of algorithms, applicable to a wider range of scenarios



Smoke  
Detection



Fire Point Detection/  
Firework Detection



Human  
Detection



Vehicle  
Detection



0.2x0.2m Fire Point



Dual spectral all-  
weather online  
monitoring



High temperature alarm,  
real-time display of  
temperature value



Intelligent fireworks detection  
Fireworks detection: visible  
light channel  
Fire point detection: thermal  
imaging channel



Dual Channels with IVS

**IVS:** perimeter/single virtual fence/double virtual fences/multi loiter/converse/people counting/region entrance/region exiting



Flexible Setting of Defense Area

Support setup multiple polygon areas



Real-time Acoustooptic Deterrence

**Broadcast:** built-in 12 voice, customizable, adjustable volume  
**Alarm lamp:** white light flicker, brightness adjustable

Temperature  
Measurement Online



Custom Point/Line/Area Temperature Measurement

Temperature range: -40°C ~ +150°C

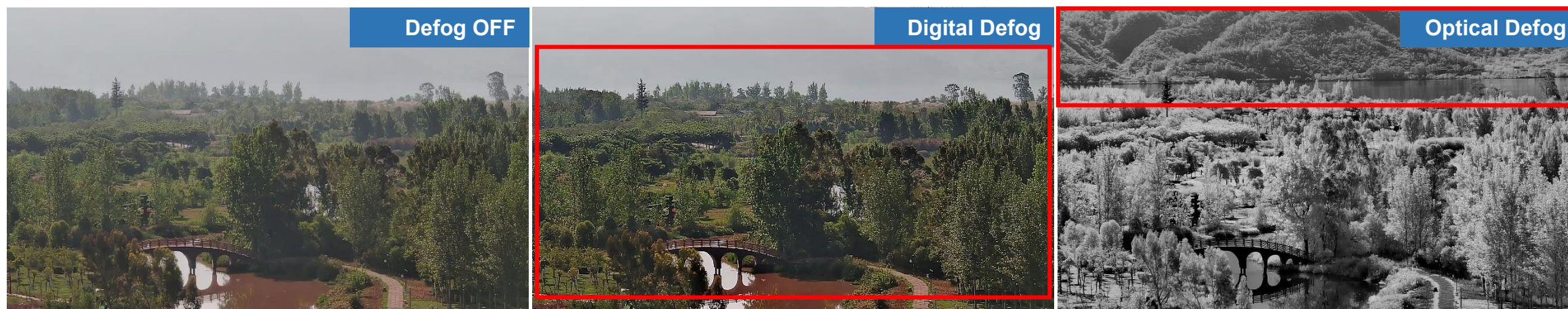


V205 bolometer thermal camera 12μm, 256x192px + 1/1.8" 4MP CMOS 30fps / 25 fps,  
 3.2mm f/1.1 57° (3.75mRad) heat + 4mm f/1.4 90°, visible light.  
 0.001 lux color, 0.0005 lux BW, IR, 850nm 50m max (0.0 lux), 120 dB WDR  
 H.264, H.265 + Intelligent Compression, two independent video channels  
 1280x720@25fps thermal image + 4M (2688x1520)@25fps  
 Thermal: max 10 fire detection areas, smoking person detection,  
 alarmtemperature min/max alarms, up to 12 rules,  
 below or above range -20°C to +150°C with +/-8°C accuracy.



Visible: intrusion detection, line crossing,  
 man/vehicle detection, active deterrence, ...  
 mp3 with sound and blue-red flashing light,  
 microSD, 256GB max, alarm input/output 2 / 2,  
 Protection: IP 67, IK10, 4kV max  
 Power supply: PoE (IEEE 802.3af/at),  
 DC 12V±25%, 12W max  
 Dimensions: 354 x 104 x 116mm, 2kg  
 The junction box is part of the camera body

## Optical Defog



Long Wave



Accuracy  
±8°C



Pixel Interval



Point/Line/Region



Preset  
Measurement



Anti-burn



Auto-focus



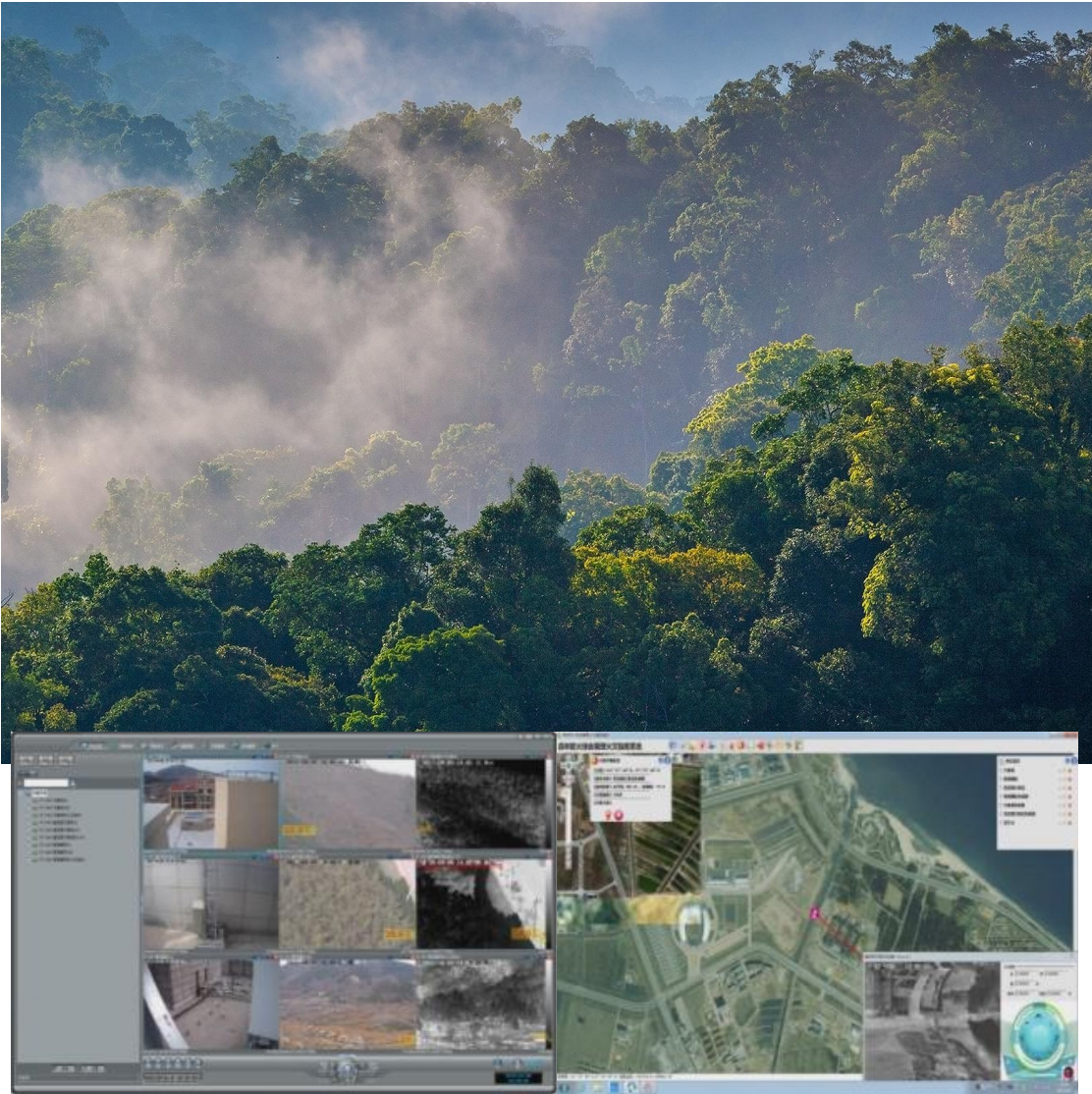
Deep learning  
Human/vehicle/ship  
Fire spot/Fire &  
Smoke/smoking



IVS  
Intrusion, Single/Double  
Line Crossing, Loitering,  
Wrong-way, Enter Area,  
Leave Area



# Forest Fire Protection



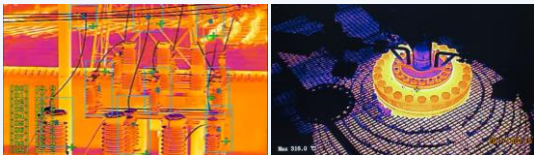
# Equipment Routing Inspection





# Network Thermal

## Real-time temperature measurement



Electric equipment

Chemical equipment

## Smoke, rain, fog and dust penetration



Regular camera

Thermal camera

## No illumination required, all-weather monitoring



Regular camera

Thermal camera

## Detect Hidden Targets

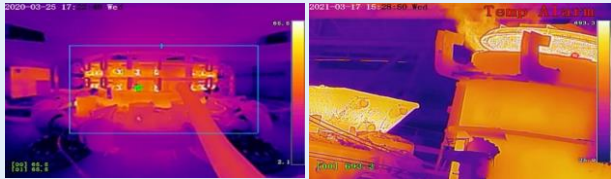


Regular camera

Thermal camera

## Temperature Measurement Range Customizable

- Standard range of measurement: -20°C to 150°C
- Customizable range: 1552°F, Dual temperature measurement range



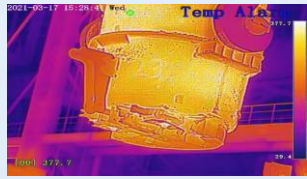
## Bi-spectrum

The algorithm is used to combine the thermal and visible channels, add the contour line of objects on thermal channel to make it easier to identify.



## Alarm Rules

### Temperature Threshold Alarm



The target temperature reaches the alarm threshold

### Temperature Difference Alarm



The difference between the highest and average temperature reaches the alarm value

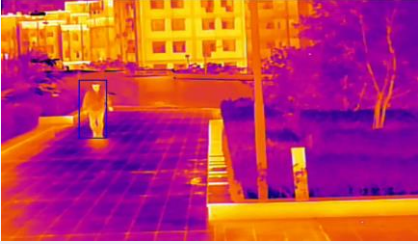
### Temperature Rise Alarm



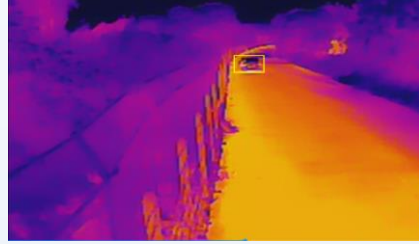
The increased temperature reaches the alarm value in a short time

# Deep Learning

Human Detction



Vehicle Detection



Ship Detection



Fire Spot Detection



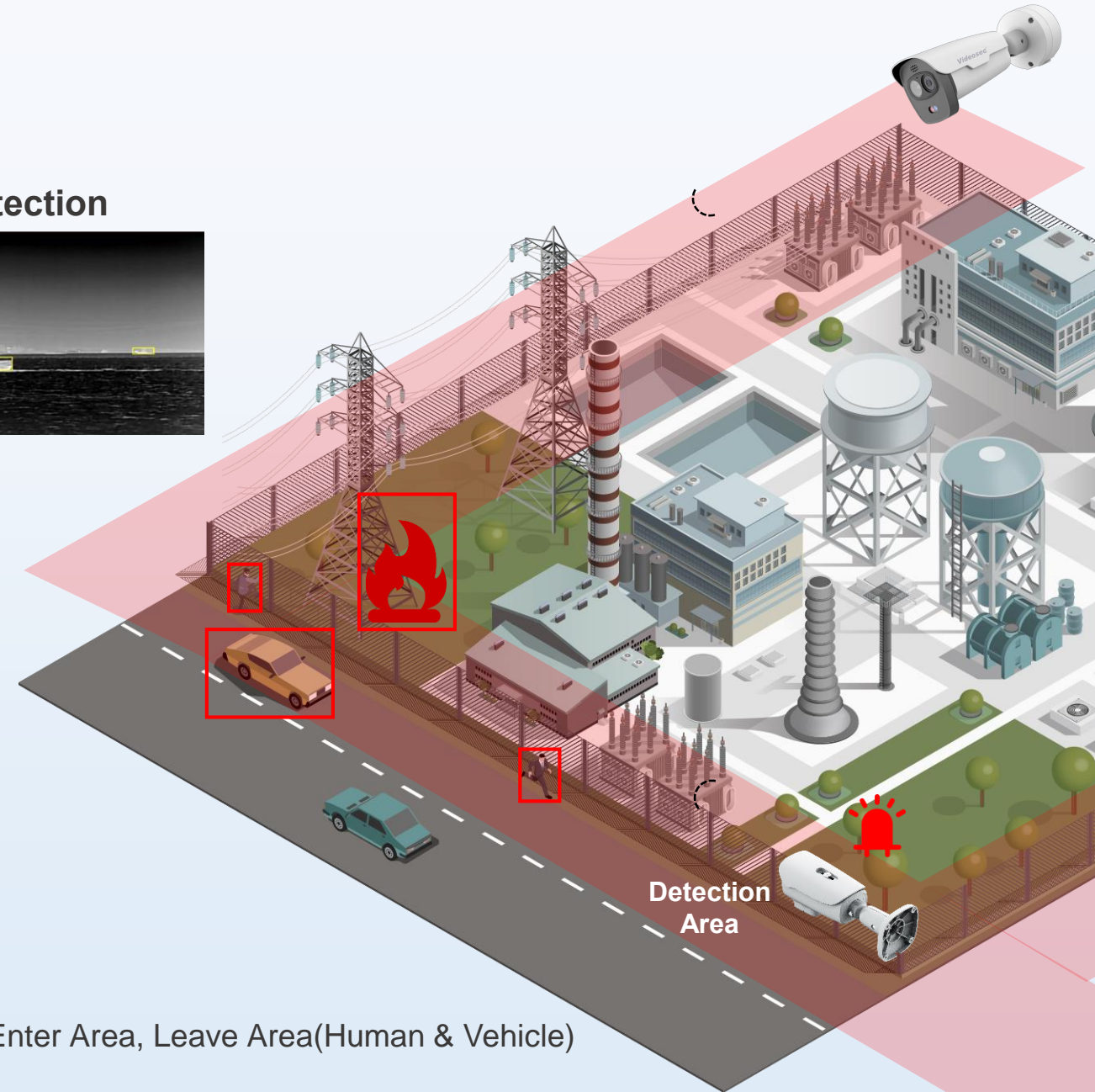
Smoking Detection



Fire Detection



Smoke Detection

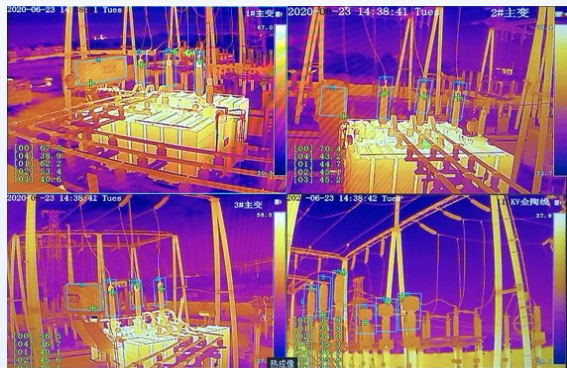


**IVS:** Intrusion, Single/Double Line Crossing, Loitering, Wrong-way, Enter Area, Leave Area(Human & Vehicle)

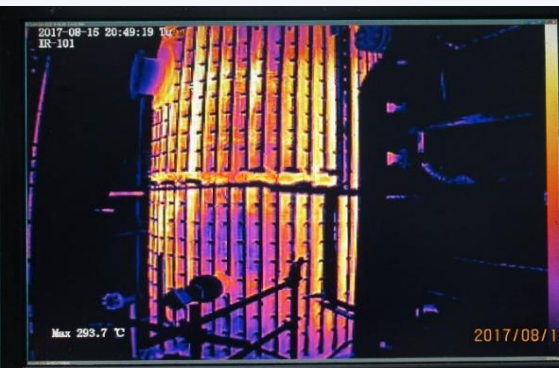


# Industrial Applications

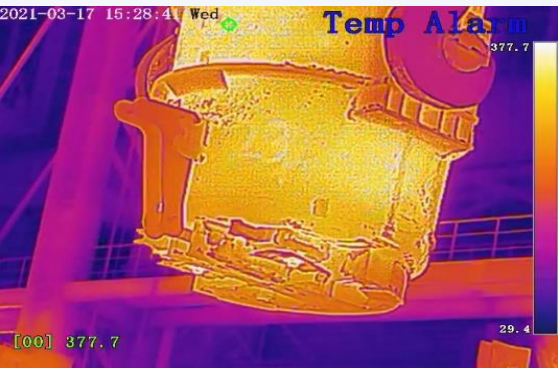
Electricity



Petrochemical



Metal Smelting



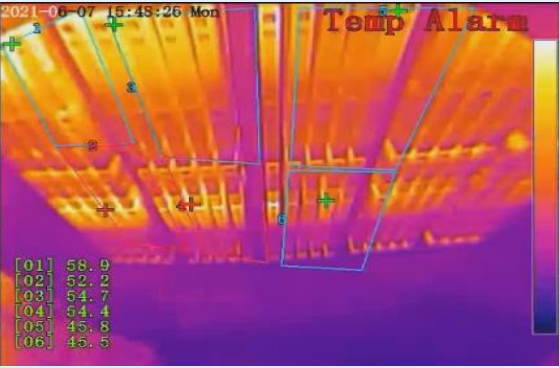
Manufacturing



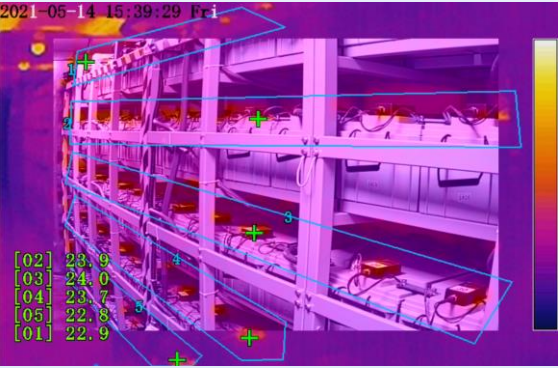
Forest Fire Prevention



Data Center



Energy Storage



Perimeter

