

O/1-10V RF + Push Dimmer

Model No.: SL-1

RF dimming/O-10V or 1-10V/AC relay output/AC Push-Dim/Wall junction box mounting



CE RoHS LVD

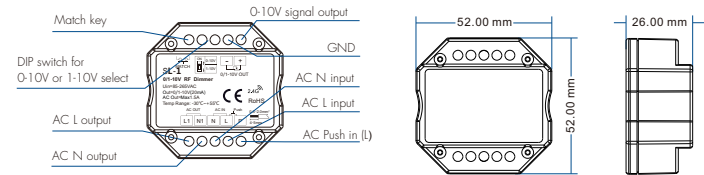
Features

- O/1-10V RF or AC push dimmer, 1 channel output.
- Output 1 channel O/1-10V signal, connect with O/1-10V dimmable driver.
- High voltage AC input, High voltage AC relay output.
- O-10V or 1-10V output selectable by DIP switch.
- 256 levels O-100% dimming smoothly without any flash.
- Compatibility with Videosec's 2.4G single zone or multiple zone dimming remote control.
- Connect with external push switch to achieve on/off and O-100% dimming function.
- Easy to be placed in standard wall junction box behind a push switch.

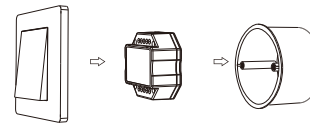
Technical Parameters

Input and Output		Dimming data	
Input voltage	AC85-265V	Input signal	RF 2.4GHz + Push Dim
Output voltage	AC85-265V	RF Control distance	30m
Output signal	O/1-10V (20mA)	Dimming level	256 levels
Output current	Max 1.5A (AC)	Dimming range	0-100%
Safety and EMC		Environment	
EMC standard (EMC)	EN 55015:2013	Operation temperature	Ta: -30°C ~ +55°C
	EN 61547:2009	Case temperature (Max.)	Tc: +85°C
	EN 61000-3-2:2014 EN 61000-3-3:2013	IP rating	IP20
Safety standard (LVD)	EN 61347-2-11:2002 EN 61347-1:2015 EN 62493:2015	Warranty	
Certification	CE, EMC, LVD	Warranty	5 years

Mechanical Structures and Installations



Typical Wall Junction Box Mounting



Wiring diagram

- Connect with O/1-10V dimming driver (no use AC OUT)

