

USER MANUAL



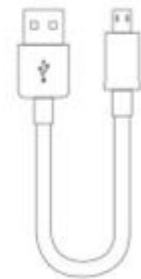
Inside the Package



WiFi Universal Remote

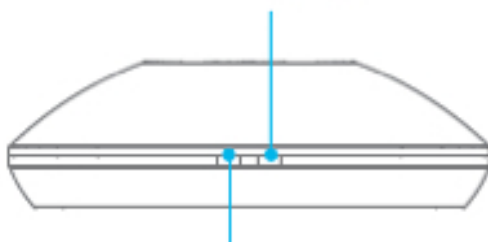


Power Adapter



USB Cable

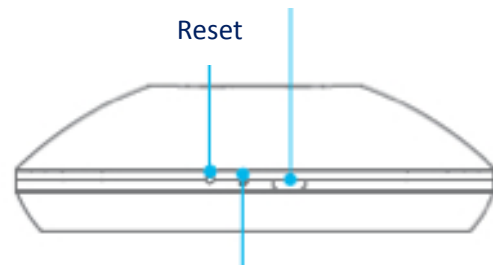
'Orange' Light Indicator



WIFI 'Blue' Light Flashing

Front View

Micro USB



Micro-Port

Right View

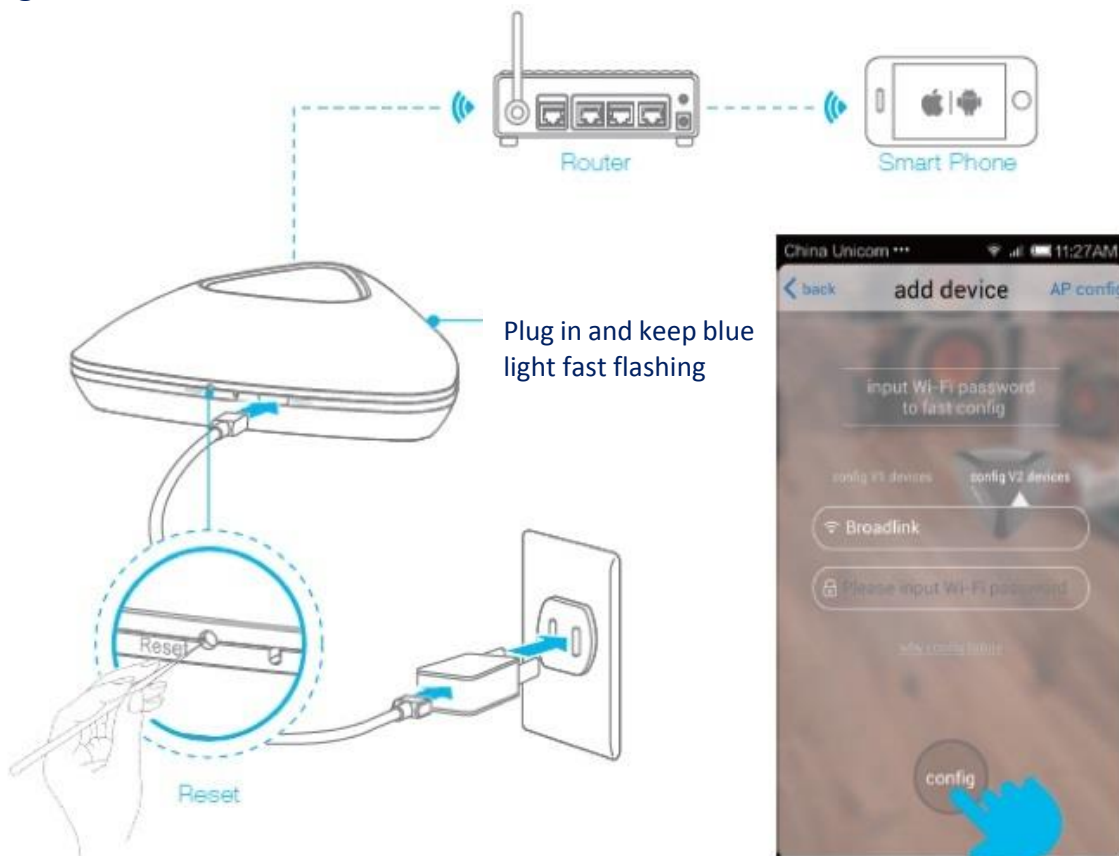
WIFI UNIVERSAL REMOTE (Model: RM-PRO)

Download e-Control



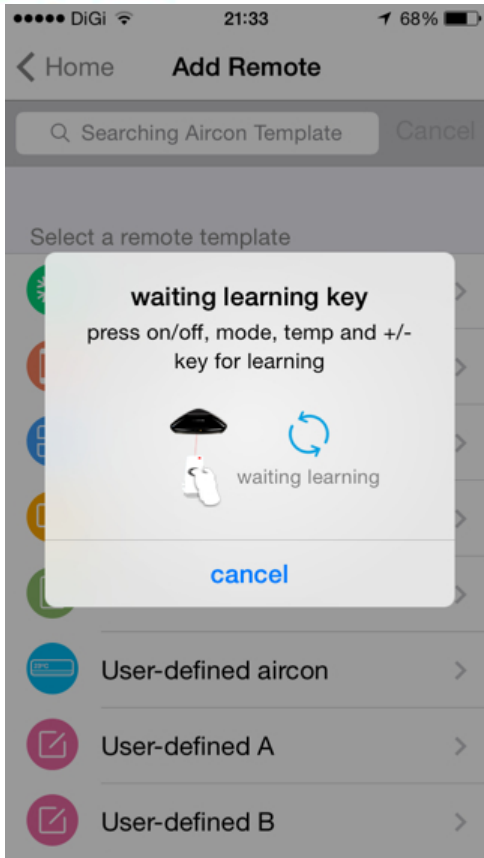
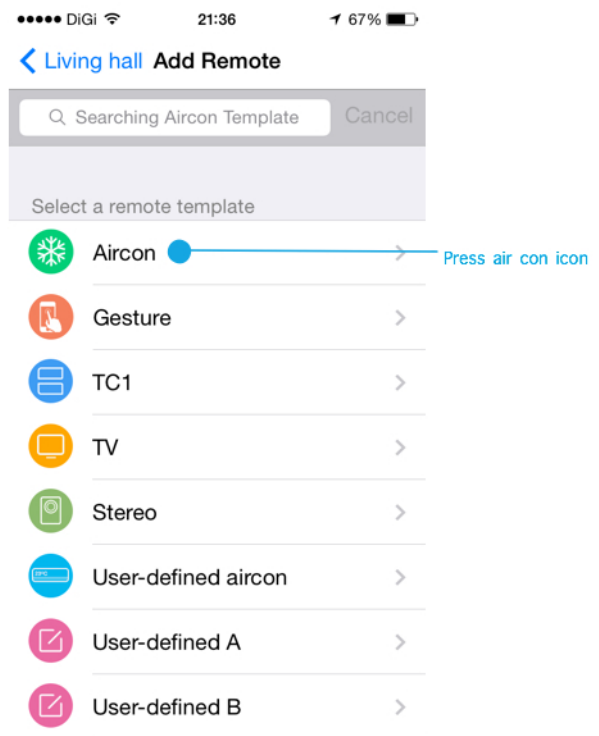
Scan QR Code from package

Configuration

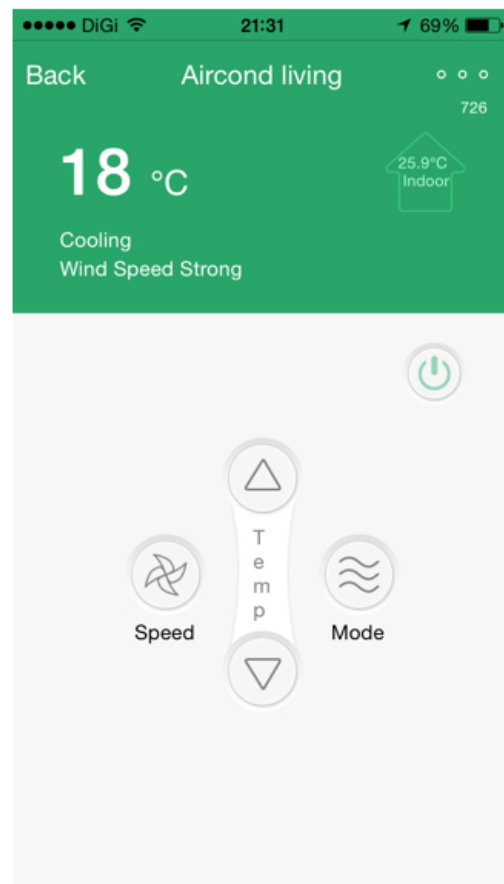


- Plug the RM-PRO's power supply into a power outlet, and keep RM-PRO in WIFI coverage, then connect your smartphone to WIFI
- Ensure the WIFI light on RM is flashing rapidly at about 5-6 times per sec. Otherwise, please press reset button until the blue light is fast flashing

Air-Conditioner Setting

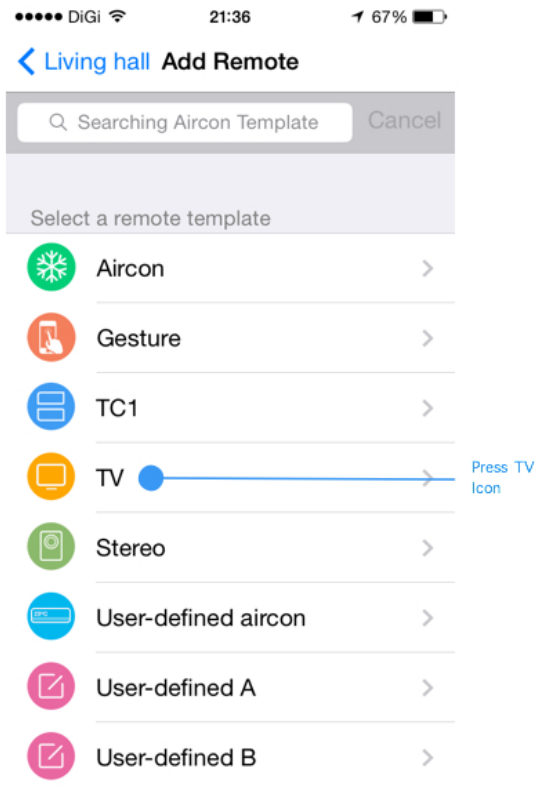


Press your aircond remote control for learning



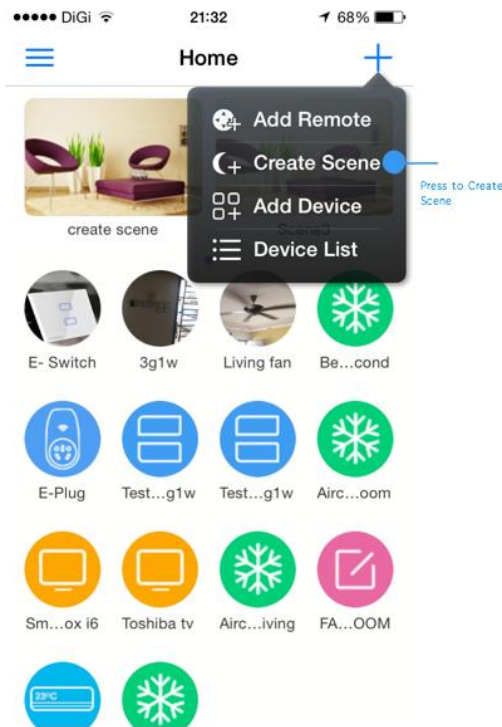
WIFI UNIVERSAL REMOTE (Model: RM-PRO)

Learn TV Remote Control

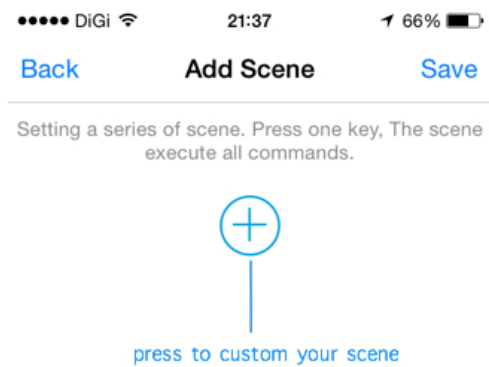


Press any icon to learn the button you want.
Long press icon, to scheduling on/reset learning icon

Create Scene

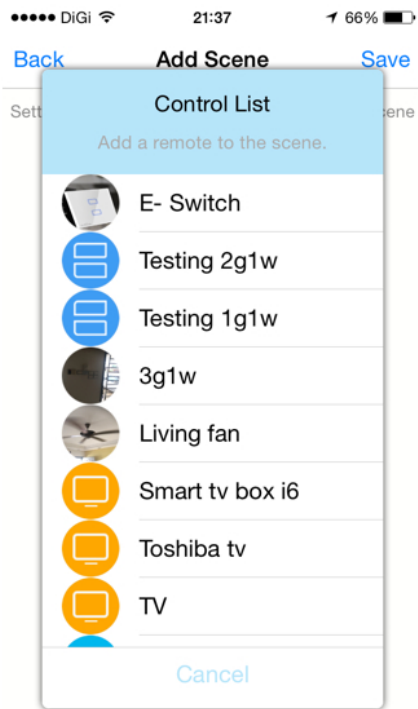


Scene – Theme Setting
Consecutive actions will be taken by just one click

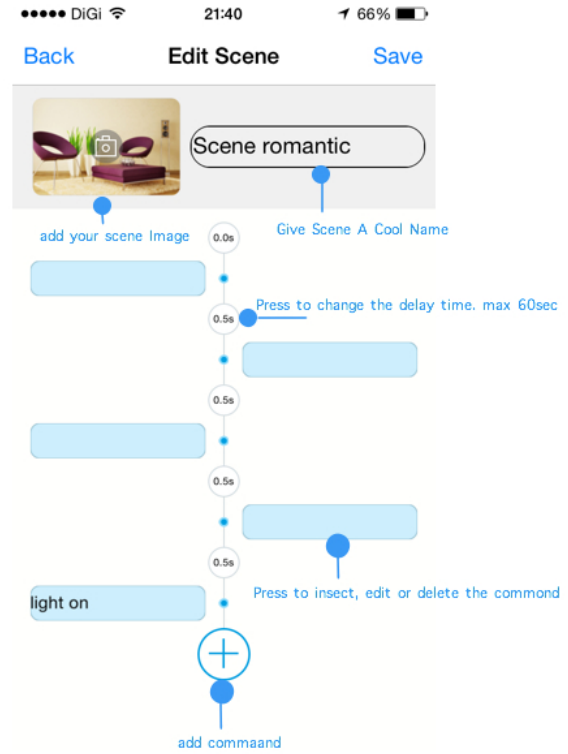


Example: When 7am – Open eletric blind/curtain, on your coffee machine, off night light, off fan and air cond, on tc with news channel, on living air cond & fan, on toaster and egg maker

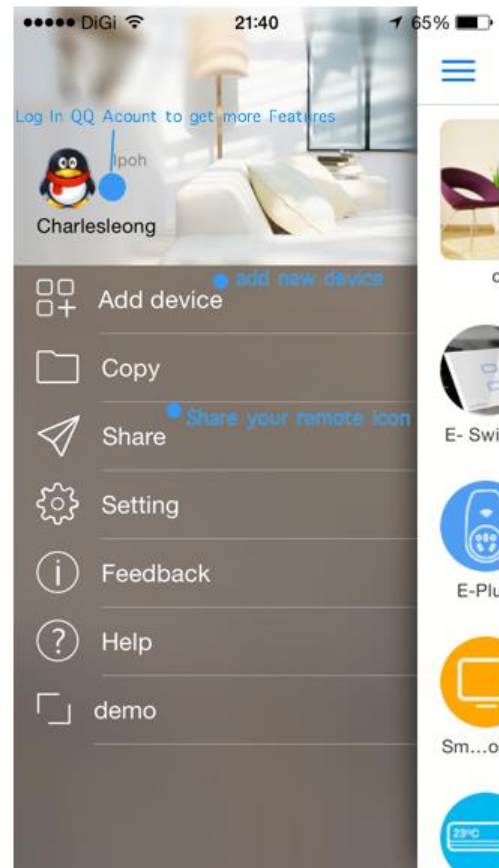
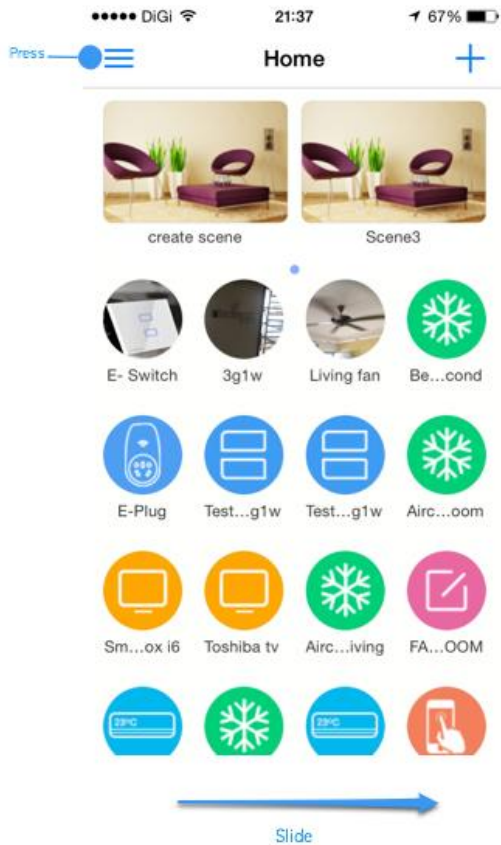
WIFI UNIVERSAL REMOTE (Model: RM-PRO)



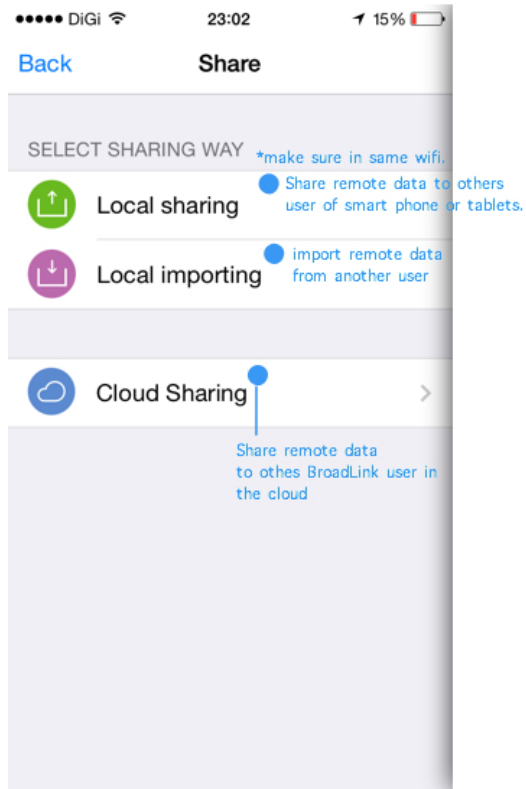
Add any control to your own scene



More Features



WIFI UNIVERSAL REMOTE (Model: RM-PRO)



FAQ

Question:

WIFI light on the device is flashing

Answer:

- The WIFI light is flashing quickly
If the WIFI light is flashing quickly, it means that the BroadLink device is in the original factory state
It is ready for you to start configuring it
- The WIFI light is flashing slowly
If the WIFI light flashes slowly for 4 flashes and then stops flashing for 1 second, and then repeats this cycle, it means the BroadLink device is waiting for you to configure it. Please press at the upper right icon to start the configuration
- The WIFI light is flashing very slowly
If the WIFI light is flashing 1 time every 3 seconds indicates that the device has not connected to the WIFI. Check your WIFI is running
- The WIFI light is flashing slowly and continuously
If the WIFI light keeps on flashing continuously at 1 flash per seconds, it means the configuration has failed, please reset the device and configure again

WIFI UNIVERSAL REMOTE (Model: RM-PRO)

Question:

How to protect my device and prevent others finding it?

Answer:

- ➔ Only connect to your home WIFI, and then can find your device. Once this is done you can lock your device at “Device Info” page.

Note

Please refer to User Manual in BroadLink App for Details

1 Year Limited Warranty

Warning

This device complies with part 15 of the FCC Rules, Operation is subject to the following two conditions:

- This device may not cause harmful interference, and
- This device must accept any interference received, including interference that may cause undesired operation
- Changes or modifications not expressly approved by the party responsible for compliance could void the user’s authority to operate the equipment

FCC Radiation Exposure Statement

This equipment complies with FCC radiation exposure limits set forth for an uncontrolled environment. This equipment should be installed and operated with minimum distance 20cm between the radiator & your body. This transmitter must not be co-located or operating in conjunction with any other antenna or transmitter