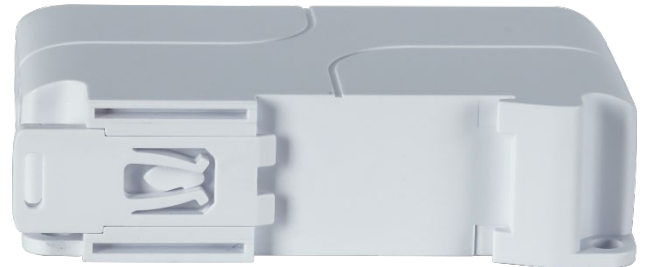


3+1 port PoE Switch

PS03FE+1PD-DIN



Key Features

- 3*10/100Mbps POE port; 1*10/100Mbps Uplink port;
- ≤100m Distance
- VLAN and extend mode (250m)
- Support IEEE802.3af/at
- Whole Power: 30W
- Support installation on DIN rail or surface

Specifications

Model	PS03FE+1PD-DIN
Product	3+1 Port POE Switch
PoE Port	1 to 3 support IEEE802.3at/af Standard
Output Power	Amx. 25W/ Average 8,33W
Power Pin	Both 1/2+, 3/6- and 4/5+7/8-
Whole Power	≤30W
PoE Protocol	IEEE 802.3af/IEEE 802.3at
PoE Type	End-span
Power Distance	≤100m
Network Standard	IEEE 802.3, IEEE802.3u, 802.3x, 802.3af/at
Network Medium	10/100BASE-TX: 5 class and above non shielded twisted pair
Data Distance	≤100m
VLAN& Extend mode	yes (On/Off), max. 250m in extend mode
Switch Capability	1Gbps
Forwarding Mode	Store and forward
Forwarding Rate	10BASE-T:14880pps/port
	100BASE-tx: 148800pps/port
MAC Address	MAC address table 1K
Port Function	Power priority mechanism, fast and forward, MAC automatic learning and aging
	IEEE802.3X Full-duplex and mode and backpressure for Half-duplex mode
LED Indicator	POE Status Indicator; Power indicator
Working Environment	Working temperature: -10°-- 55°C
Weight	100g
Size	84mm*54mm*27mm(L*W*H), plastic house

Installation

