

Videosec®

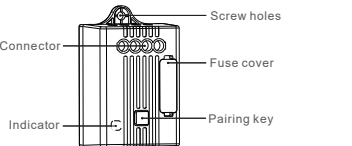


KRC-309 Receiving Controller

Instructions

Product Description

Videosec KRC-309 controller can be used with Videosec KS2, KM1 and K1 wireless kinetic energy switch to control electrical appliances. The controller is able to connect to WiFi networking, using APP for remote control and timing control. It also supports Echo voice control.

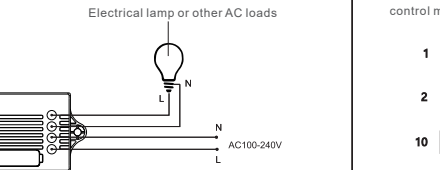


Product Parameters

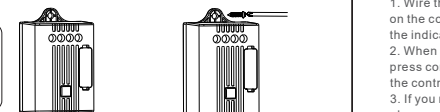
Product Model: KRC-309
Product Name: Single Channel Receiving Controller
Operating temperature: -20~55°C
Distance: 160m (outdoor) 30m (indoor)
Sensitivity: -110dBm
Voltage: 100~240V 50/60Hz
Dimension: L70*W44*H29mm
Rated power: LED 600W (maximum current 5A)
Wireless Communication: Wi-Fi IEEE 802.11 b/g/n 2.4G & RF 433Mhz
Storage capacity: Up to 10 switches can be paired
Execution standards: EN61058-1; 2002+A2; 2008;
GB 14536.1-2008

Note: The effective distance data is measured in laboratory and will vary in actual use due to environmental changes.

Installation



Wiring

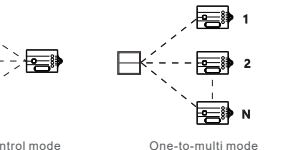


Fixing method 1:
Use the double-sided adhesive tape included in the package to paste on a clean surface

Fixing method 2:
Use self-tapping screws to lock in expansion screws in the wall

Combination

The controller and the kinetic energy switch can be freely combined by pairing to form the one-to-multi and multi-to-one control mode.



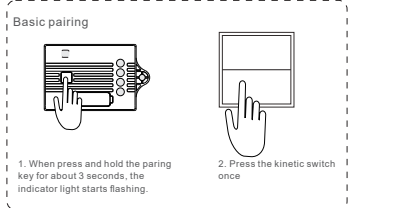
Basic pairing

1. Wire the controller's input with power, hold the pairing key on the controller for 3 seconds, and release the button when the indicator light flashes.
 2. When press the selected kinetic energy switch once (do not press continuously), the indicator light goes out, which means the controller is successfully paired with the kinetic energy switch.
 3. If you need to pair with multiple kinetic switches, repeat the above procedure. A controller can pair with 10 kinetic switches at maximum.
- After the pairing is successful, the controller can be controlled by the kinetic energy switch. When it is not connected to the load, the on and off of the controller can be judged by the on and off of indicator.

Directional pairing (not commonly used)

In order to meet the user's habits of using traditional switches, and ensure the synchronization of the states of multiple controllers in a one-to-multi control mode, we define the directional pairing method. This pairing method only supports rocker switches, two-button or six-button push button switches.

- 1 Connect the controller's input with power and press and hold the "pairing key" on the controller for about 3 seconds, release the button when the indicator lamp flashes.
- 2 Press the selected kinetic switch twice (within 0.5 seconds). The rocker switch is to press its upside and downside once respectively. The push button switch is to directly press any one of the two keys in succession.
- 3 After the pairing is successful, the downside of rocker switch is pressed to turn on lamps, and the upside is pressed to turn off lamps. For push button switch, the left and right buttons are as a group. Press the left button to turn off lamps, and the right button to turn on lamps.



Directional Pairing of Rocker Switch

1. When press and hold for about 3 seconds, the indicator light starts flashing.
- 2 Quickly press the upside and downside of switch once respectively (in 0.5 seconds)
- 3 After successful pairing, press to open and press to close

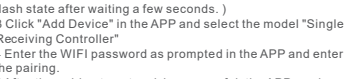
Rebound Switch Orientation Pairing (only supports double or six keys)

- 1 Press and hold for about 3 seconds, the indicator light starts flashing
- 2 Quickly press any key twice (in 0.5 seconds)
- 3 After pairing is successful, press the left button to turn off lamps, and the right one to turn on lamps.

Clear Pairing

1 If you need to unmatch the kinetic energy switch and the controller, press and hold the controller "pairing key" for about 12 seconds. The indicator blinks, keeps lit and is off. At that time, all the previous paired information of kinetic switch with this controller is cleared

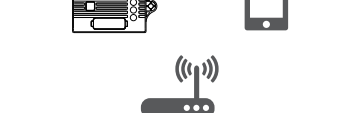
If needed to use the controller again, please follow the instructions to re-pair.



Press and hold for about 12 seconds, the indicator flashes until it is lit, and finally it goes out.

APP Download

The controller can be controlled remotely by using the APP. You can search "kinetic switch"APP in the application market to download it or download it by scanning the following QR code.

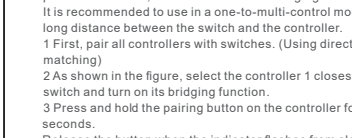


Please make sure the indicator light flashes quickly.

Connection to WIFI

- 1 Use your mobile phone to download the app and follow the prompts to register your account in the app.
 - 2 Connect the controller to power and confirm that the indicator light is flashing rapidly (2 flashes in 1 second). (If the LED is not flashing, press and hold the pairing button on the controller for 10 seconds.
- The indicator will flash from slowly to fast and then keep lit still. Release the button at this moment. The indicator will enter the flash state after waiting a few seconds.)
- 3 Click "Add Device" in the APP and select the model "Single Receiving Controller"
 - 4 Enter the WIFI password as prompted in the APP and enter the pairing.
 - 5 After the pairing to network is successful, the APP can be used to remotely control the controller and smart scene.
 - 6 If you change the WIFI router or the WIFI password, please start from the second step to re-set the controller.
- During matching, the three devices should be as close as possible. Please make sure that the indicator flashes fast

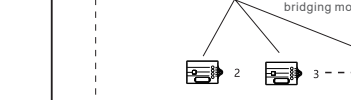
During matching, the three devices needs be as close as possible.



Please make sure the indicator light flashes quickly.

ECHO

- 1 In the Kinetic Switch APP, rename the controller devices, such as bedroom lights
- 2 Add the skill SmartLife in Alexa APP, and log in by using the account and password of the Kinetic Switch APP
- 3 Discover the device in the smart application selection in the Alexa app
- 4 Now you can voice control the controller



Bridging Function

In order to increase the distance of control and the ability to penetrate the wall, we have defined the bridging function. It is recommended to use in a one-to-multi-control mode in a long distance between the switch and the controller.

- 1 First, pair all controllers with switches. (Using directional matching)
- 2 As shown in the figure, select the controller 1 closest to the switch and turn on its bridging function.
- 3 Press and hold the pairing button on the controller for about 7 seconds.

Release the button when the indicator flashes from slowly to fast. Wait for a few seconds, the controller's indicator flashes once every two seconds, which means bridging function is on.

Troubleshooting

- 1 WIFI is not connected
Troubleshooting method: Please confirm the indicator light flashes (2 times 1 second) before connection settings; If it is not flashing, please refer to the WIFI connection instructions to set the indicator to flash.
Do not use the Chinese WIFI name; let routers, controllers, and mobile phones the three are as close as possible (within 5 meters).
- 2 The controller is occasionally offline in the app
Troubleshooting method: it may be that the number of connected devices reaches the upper limit, and for the general route the maximum number of connected devices is 15. The router can be upgraded or turn off non-needed equipment.
- 3 No response after the controller is on
Troubleshooting method: If you use a load or it is short circuit that exceeds the rated current, the fuse may have blown. Please remove the short-circuit fault, open the cover and replace with same fuses of the same specifications.
- 4 When the load is LED light, the LED lamp has weak glow in the off state.
Troubleshooting method: Please follow the L (live line) and N (neutral line) symbols on the controller to correctly wire the neutral and live line at the input part.

Distributor:
Euro Tech Corporation Ltd.
6724 Szeged, Hungary
Üstökös str. 12/b
Web: www.videosec.com

