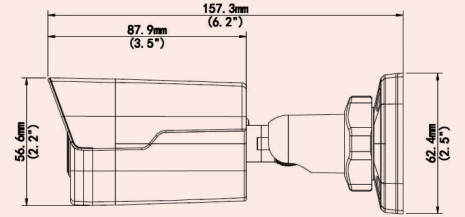
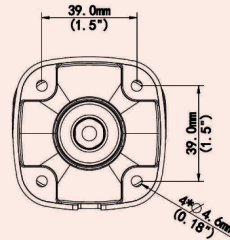
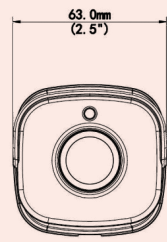




# IPW-2122-40C

## 2MP Mini Fixed Bullet IR Network PoE Camera

- Day/night functionality
- Smart IR , up to 30m IR distance
- Optical glass window with higher light transmittance
- IR anti-reflection window to increase the infrared transmittance
- 3D DNR (Digital Noise Reduction)
- H.265, H.264, MJPEG triple streams + Smart Encoding
- Embedded smart algorithm
- 9:16 corridor format
- ONVIF Conformance
- Wide temperature range: -35°C to 60°C
- Wide voltage range of ±25%
- IP67
- Junction Box: JB05-IN



### Specifications

Sensor	1/2.7", 2.0 megapixel, progressive scan, CMOS
Shutter	Auto/Manual, 1/6~1/1000000 s
Lens	4.0mm@F1.8 Angle of view(H): 86.5°
Min. Illumination	Colour: 0.005 Lux (F1.8, AGC ON), 0 Lux with IR
Day/Night	IR-cut filter with auto switch (ICR)
IR Range	Up to 30m IR range
S/N	>52 dB
WDR	Digital
Noise Reduction	2D/3D-DNR
Max. Resolution	1920 x 1080
Video Compression	H.265 + Smart Encode, H.264, MJPEG
Frame Rate	1080P (1920*1080): Max. 30 fps; 720P (1280*720): Max. 30 fps; D1 (720*576): Max. 25 fps
9:16 Corridor Mode / ROI	Supported / Supported
Video Streaming	Triple
OSD	Up to 8 OSDs
Privacy Mask	Up to 4 areas
Behavior Detection	Intrusion, crossing line, motion detection (22x18 grid / 4 area)
Intelligent Identification	Face detection
Statistical Analysis	People counting
General functions	Watermark, IP Address Filtering, Tampering Alarm, Access Policy, ARP Protection, RTSP Authentication, User Authentication
Protocols	L2TP, IPv4, IPv6, IGMP, ICMP, ARP, TCP, UDP, DHCP, PPPoE, RTP, RTSP, RTCP, DNS, DDNS, NTP, FTP, UPnP, HTTP, HTTPS, SMTP, SIP, STUN, 802.1x, (Telnet default: OFF)
Compatible Integration	ONVIF, API
Network	1 RJ45 10M/100M Base-TX Ethernet
Reset	1 Reset Button
Power	12 V DC ±25%, or PoE (IEEE802.3 af), Power consumption: Max.6.4 W
Dimensions (Ø x H), Weight	157.3 × 62.4 × 63 mm, 0.45 kg
Working Environment	-35°C ~ +60°C, Humidity ≤ 95% RH(non-condensing)
Ingress Protection	IP67